

PRODUCT OVERVIEW

PRESSURE MEASUREMENT

MAC Sensor Co.,LTD.
Changsha City,Hunan,China
<http://www.macsensor.com>
TEL: +86-731-89975636 / 89975645

PF600 Series Sputtered Thin Film High-strength Miniature Pressure Sensors



PF602



PF603

Characteristics

- ☆0.5%F.S high accuracy
- ☆Sputtered film technology ensures good long-term stability and high reliability
- ☆millivolt output
- ☆Small size, 27.5mm high and 12mm outer diameter
- ☆Low temperature drift, low latency
- ☆Integrated structure, suitable for a variety of fluid media
- ☆17-4PH stainless steel material, corrosion-resistant
- ☆IP67 high protection class
- ☆Customization of range, accuracy, mechanical structure supported

Applications

For various hydraulic power system:

- ☆Hydraulic pumps, distribution valves, hydraulic actuators;
- ☆Other applications with stringent requirements for small sensor size, high performance, and high reliability:
- ☆Automotive power system control: engine oil, refrigerant, fuel, brake fluid;
- ☆Pneumatic system control, industrial automation control, special equipment, aerospace, robotics, scientific research experiments, ultra-micro equipment integration, pipeline pressure monitoring

Profiles

PF600 series high-strength miniature pressure sensors are packaged with a metal-based pressure-sensitive chip made of 17-4PH stainless steel, which is corrosion-resistant. It is fully laser welded, and the electrical connection is directly led out by Teflon wire. After 10^7 pressure cycle tests, its overload is 1.5 times, which ensures that the sensor can work normally in high-vibration environments and even harsh working conditions.

The products have a compact structure, making it easy to mount and integrate into your design. Besides, it has good long-term stability, wide temperature range, high precision, and are compatible with most oils.

And we also support customization according to your needs and your applications.

Specifications

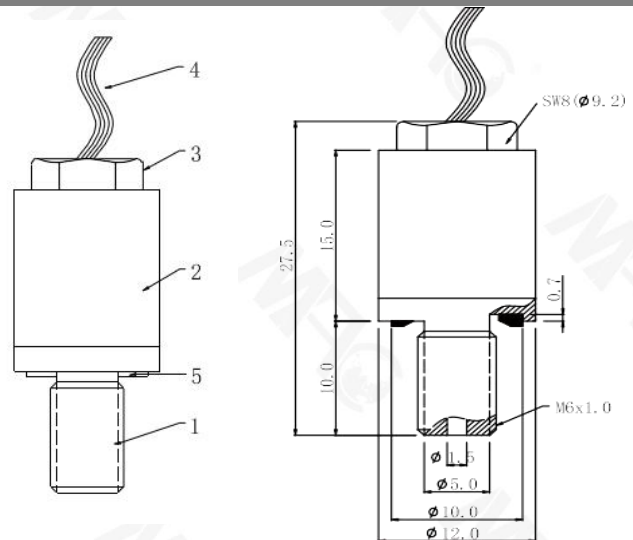
Parameter	PF600 Series
Measuring range(MPa)	6, 10, 16, 25, 40MPa
Overload pressure	150%F.S
Burst pressure	120MPa
Accuracy	$\pm 0.5\%$ F.S(full temperature zone)
Long-term stability	$\leq \pm 0.2\%$ F.S/year
Power Supply	8-32VDC
Current input	$\leq 5\text{mA}$
Output	0~20mV($\pm 2\text{mV}$), 0.5~4.5VDC
Response time	1ms
Durability	10^7 pressure circles
Sensitive component material	17-4PH
Electrical connection	Teflon outlet
Pressure connection	M5x0.8, M6x1.0, other special-shape by customized
Sealing ring	Viton O-ring, ED ring
Measuring medium	Hydraulic oils
Medium temperature range	-40~+120°C
Ambient temperature range	-40~+120°C
Storage temperature range	-40~+120°C
IP rating	IP67

Dimensions



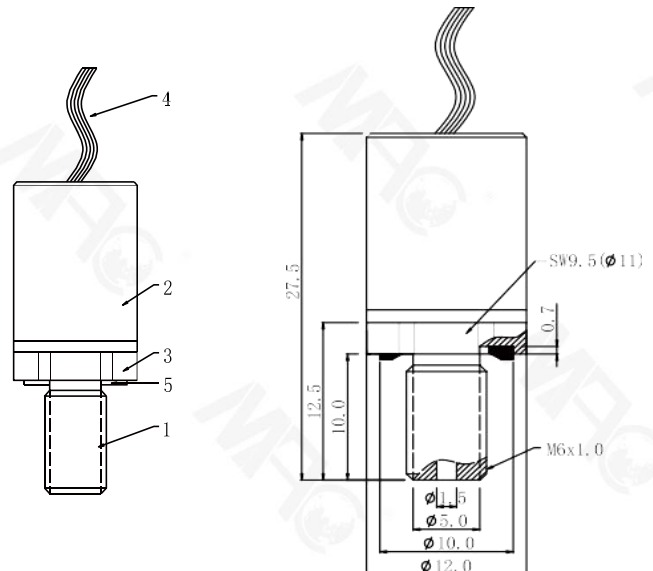
Dimensions(Upper hexagon)

1. Thread head
2. Shell
3. Hexagon
4. Teflon electrical wire
5. Fluorine rubber ED sealing ring(6.4×9.9×1mm)



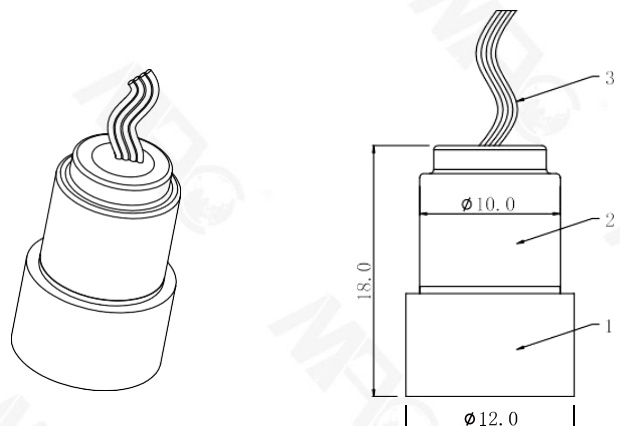
Dimensions(Lower hexagon)

1. Thread head
2. Shell
3. Hexagon
4. Teflon electrical wire
5. Fluorine rubber ED sealing ring (6.4×9.9×1mm)



Dimensions(Embedded)

1. Drain mouth
2. Shell
3. Teflon electrical wire



Order Information

Item	1	2	B	S26	M8	066	1	T
Model	1=PF600 2=PF602(Upper hexagon) 3=PF603(lower hexagon)							
Electrical Connection	02=Direct cable outlet							
Output	B=0.5-4.5V I= mV signal							
Power Supply	S26=8~32Vdc							
Pressure connection	M8=M5×0.8 M9=M6×1.0 X=By customized							
Pressure Measurement	066=6 MPa 106=10 MPa 166=16 MPa 256=25 MPa 406=40 MPa X=By customized							
Accuracy	1=0.5%F.S X=By customized							
Others	T=temperature and pressure integrated							