



FLOW SERIES

☒ ONE-STOP SOLUTION

☒ ONE-STOP SERVICE

MASS FLOW METER

MTMF Thermal Mass Flow Meter

Product Introduction



The thermal mass flow meter is designed based on the principle of thermal diffusion. The meter uses the constant temperature difference method to accurately measure the gas. It has the advantages of small size, high degree of digitization, convenient installation and accurate measurement.

Product Features

1. Convenient to measure and high accuracy provided. No need temperature and pressure compensation for gas flow measurement. Mass flow rate or standard volume flow rate of the gas can be obtained.
2. Wide range ratio, gas with flow rate up to 100Nm/s to 0.5Nm/s measurable, which can be used for gas leak detection.
3. Good seismic performance and long service life. Without moving parts and pressure sensing parts, not affected by vibration on the measurement accuracy.
4. Easy to install and maintain. If site conditions permit, installation and maintenance can be achieved without stopping production. (Need special customization)
5. Digital design. Integral digital circuit measurement, accurate measurement and convenient maintenance.
5. Support RS-485 or HART communication, it can realize factory automation and integration.

Specification

Performance	Specification
Medium	Gas (Except acetylene gas)
Pipe diameter	DN10~4000mm
Flow rate	0.1~100 Nm/s
Accuracy	±1~2.5%
Operating temperature	Sensor: -40~+220℃ Converter:-20~+45℃
Working pressure	(Medium pressure ≤ 1.6MPa plug-in type) (≤ 1.6MPa full pipe type) special pressure can be customized
Power supply	All-in-one (DC 24V or AC220V≤ 18W) Split type (AC220V≤ 19W)
Response	1s
Output signal	4-20mA (photoelectric isolation, maximum load 500Ω), pulse, RS-485 (photoelectric isolation), HART protocol
Alarming	1-2 relay normally open contacts, 10A/220V/AC, 5A/30V/DC
Structure type	Plug-in and pipeline
Supply type	Split structure, integrated structure
Pipe material	Split structure, integrated structure
Live display	Four-line Chinese character LCD display
Display	Mass flow, standard volume flow, cumulative flow, standard time, cumulative running time, standard flow rate, etc.
IP grade	IP65
Sensor material	Stainless steel 316

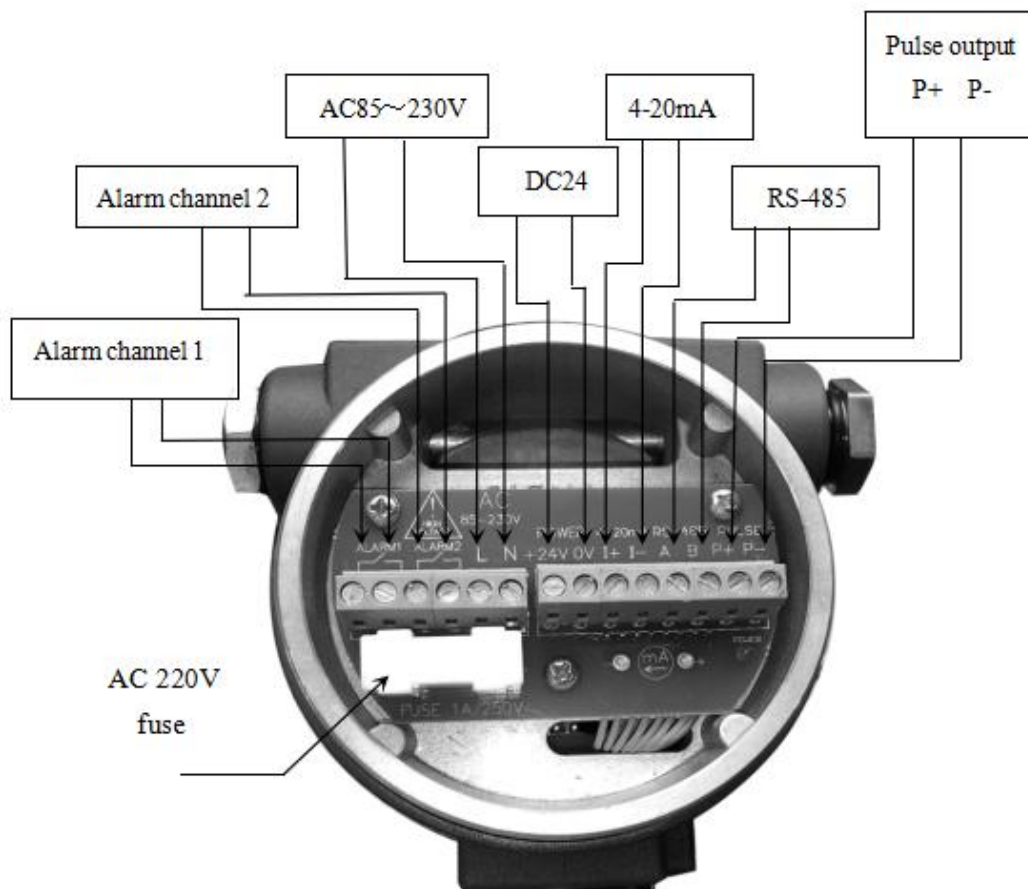
Wiring Instructions

Sensor terminal description

1	2	3	4
RT1	RT2	RH1	RH2

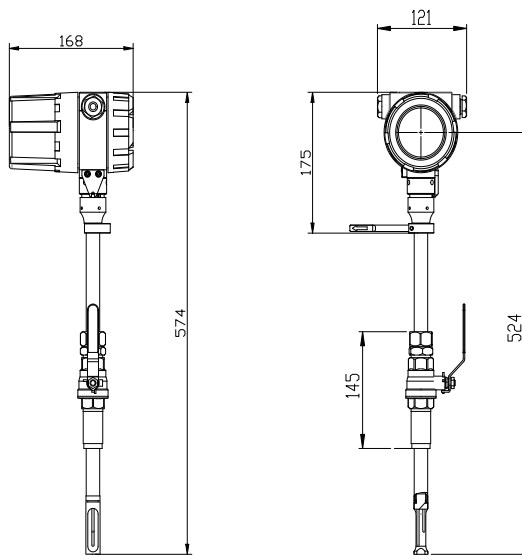
Temperature measurement(Pt1000)
 Heating(Pt20)

Terminal description and wiring method

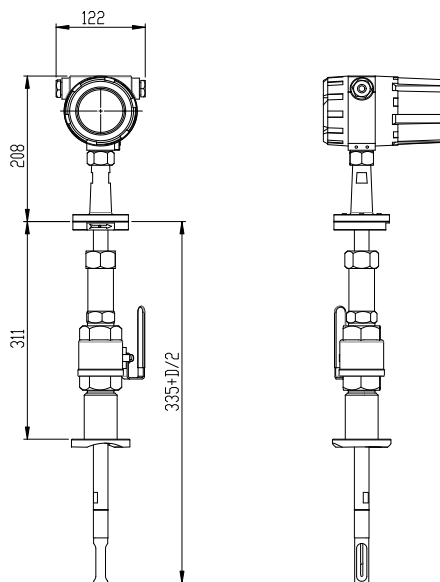


Drawings

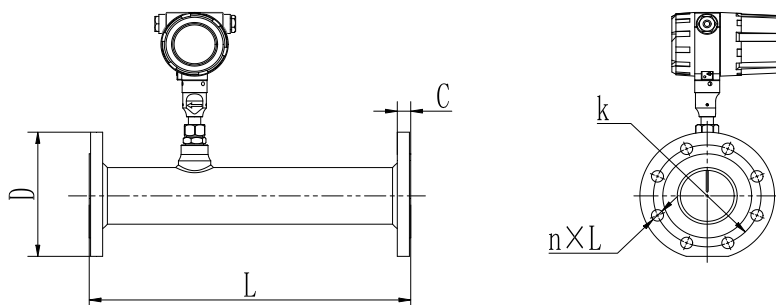
Unit,mm



Dimensions for compact type



Dimensions for standard type



Dimensions for in-pipe type